

Caso Clínico

# **ANREURISMA DE ACM TRATADO CON CONTOUR Y COILS**

## Historia clínica

- Edad:
- Sexo:
- Presentación clínica:

- Notas

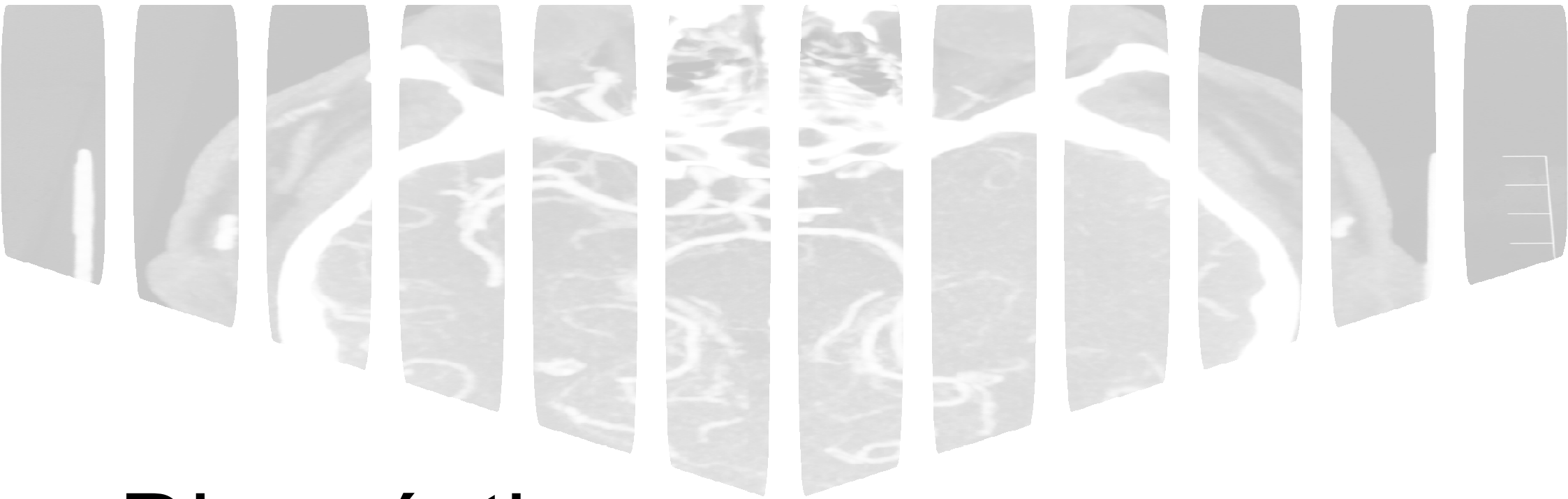


## Procedimiento

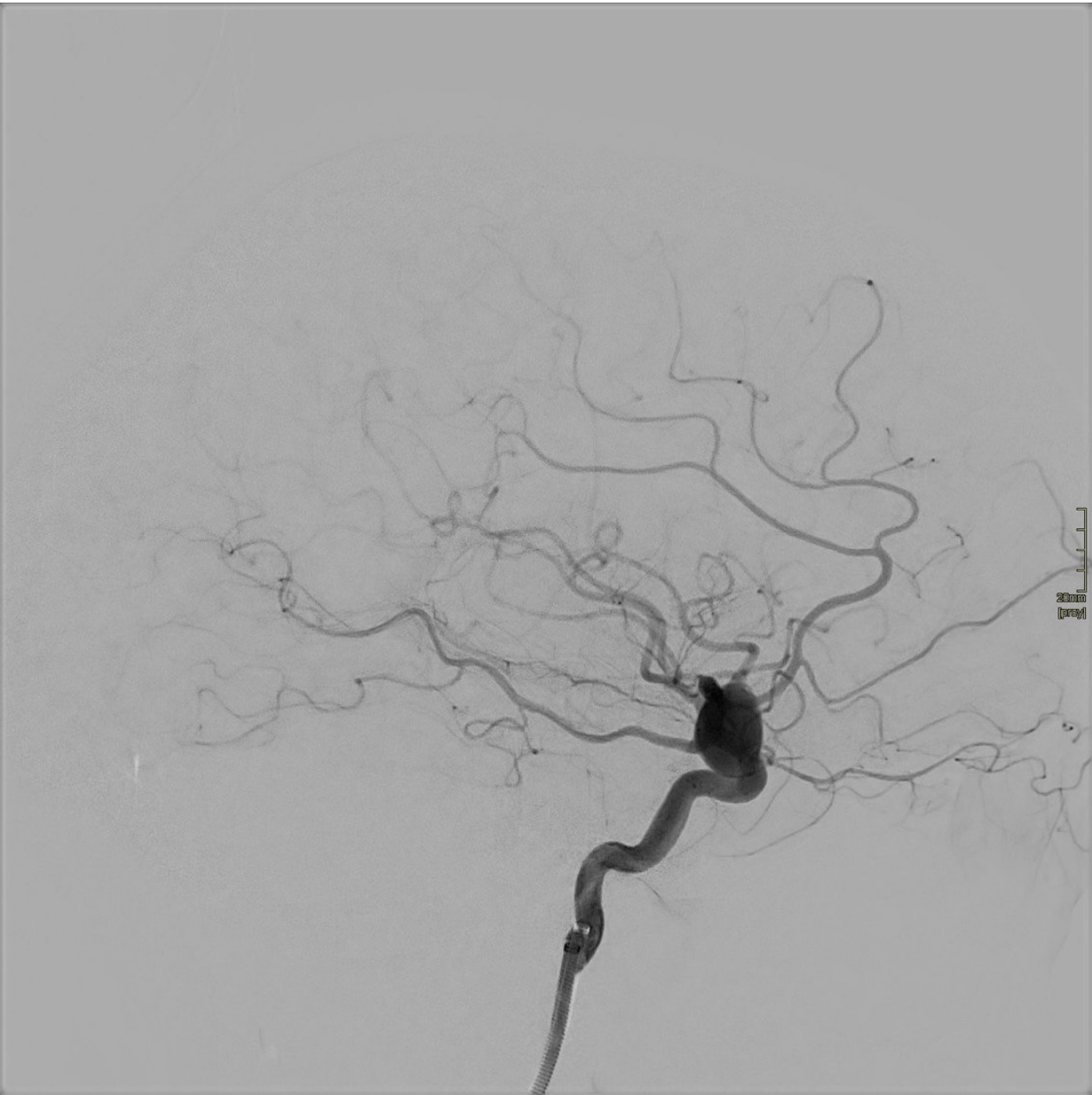
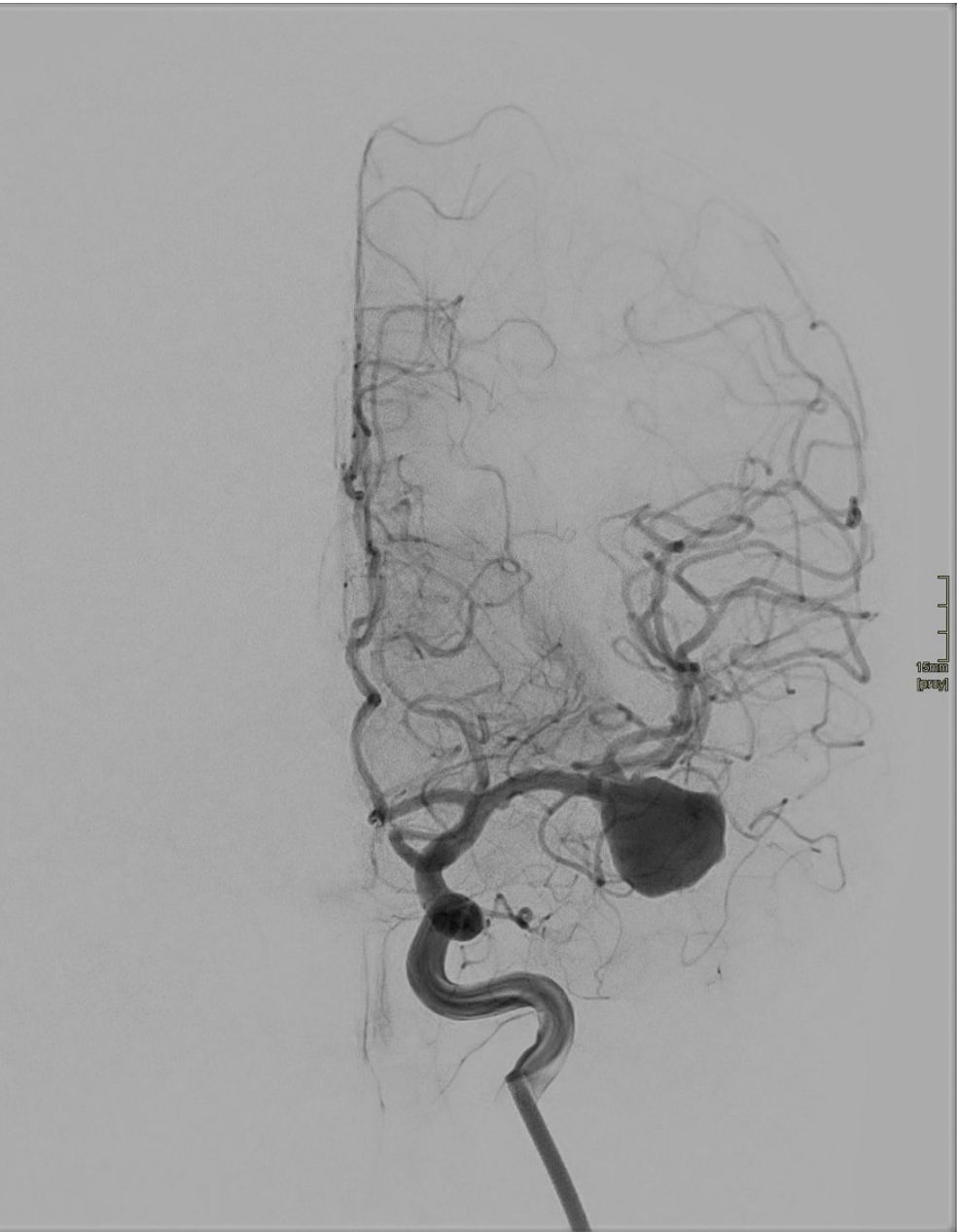
# Historia clínica

- Edad: 60-65 años
- Sexo: Mujer
- Presentación clínica:
  - Aneurisma incidental
- Notas





# Diagnóstico



reconstrucciones

Rotación

Animaciones

Modelo real

Ver anatomía

Plano anatómico

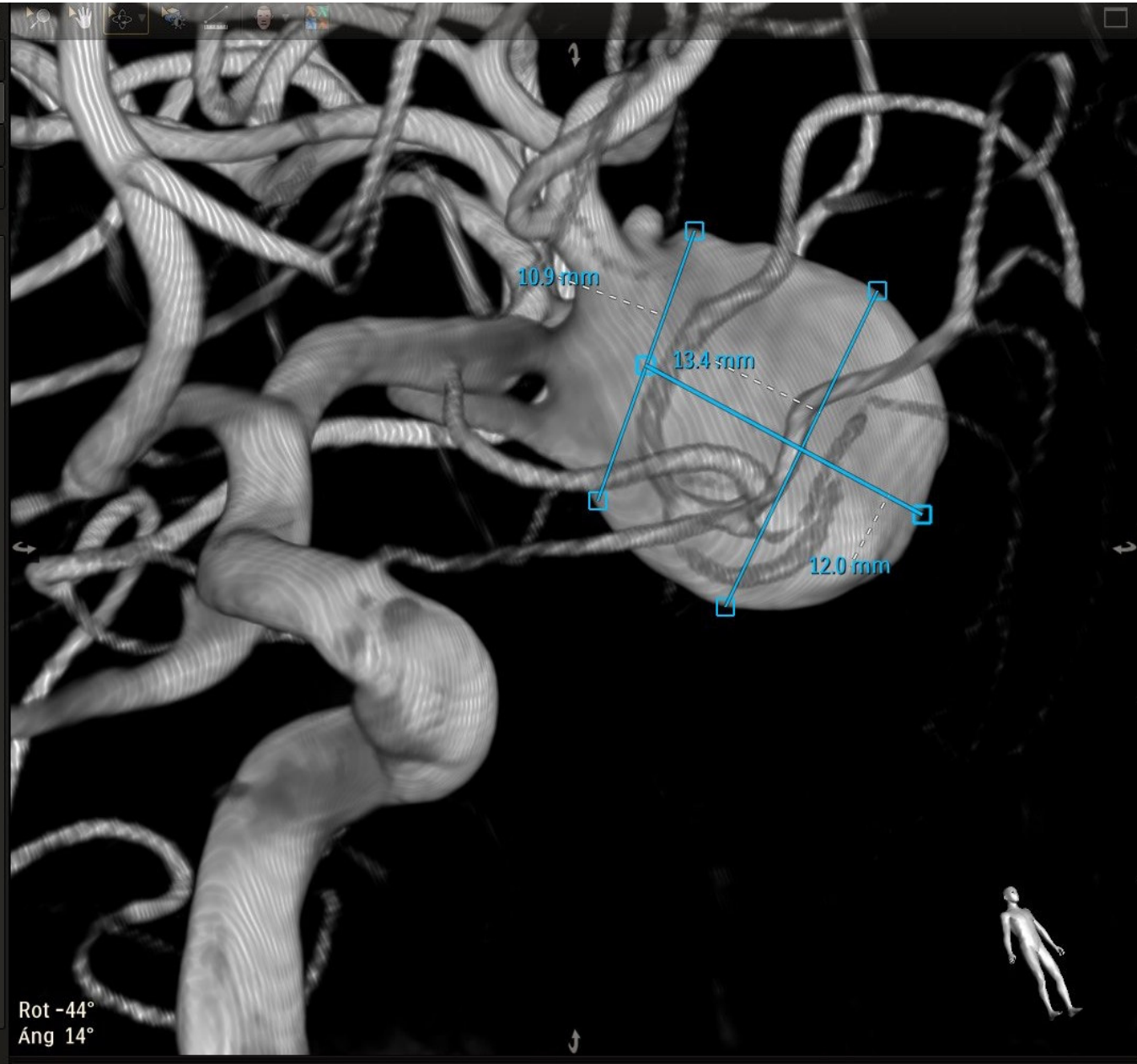
Cortes

Series

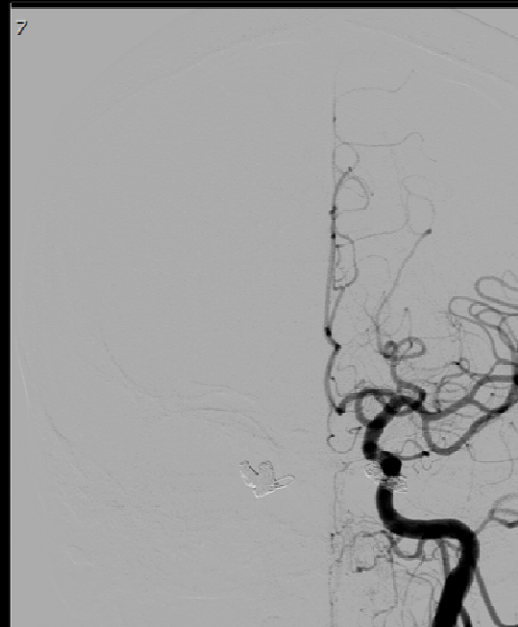
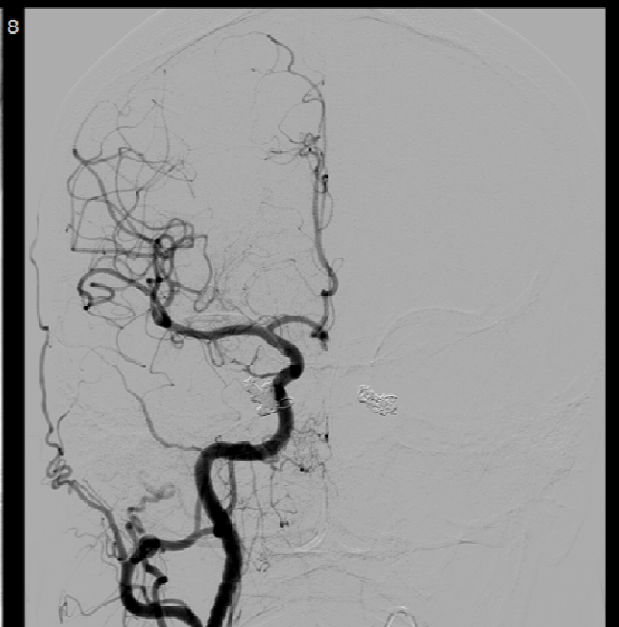
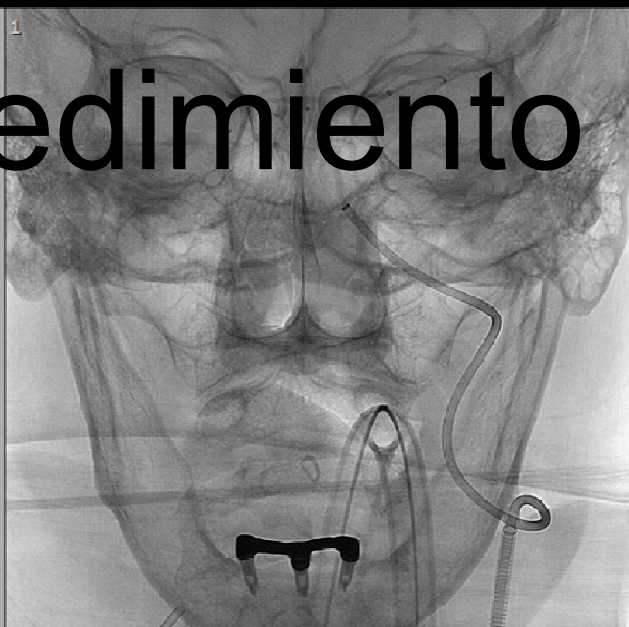
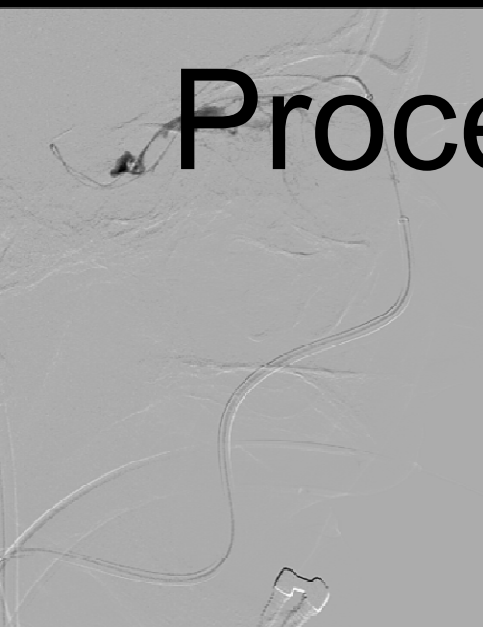
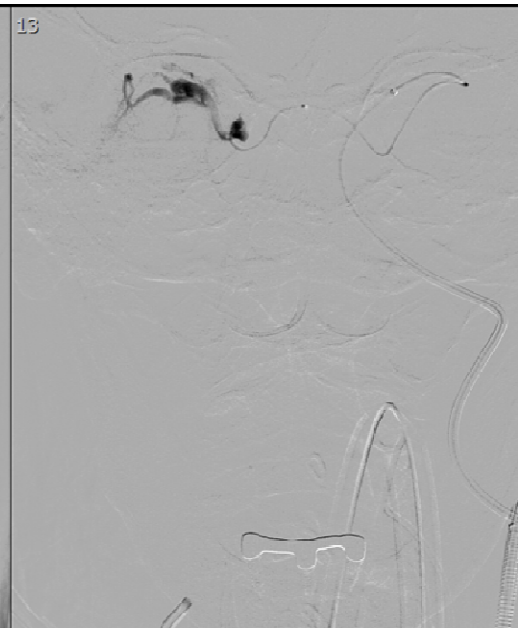
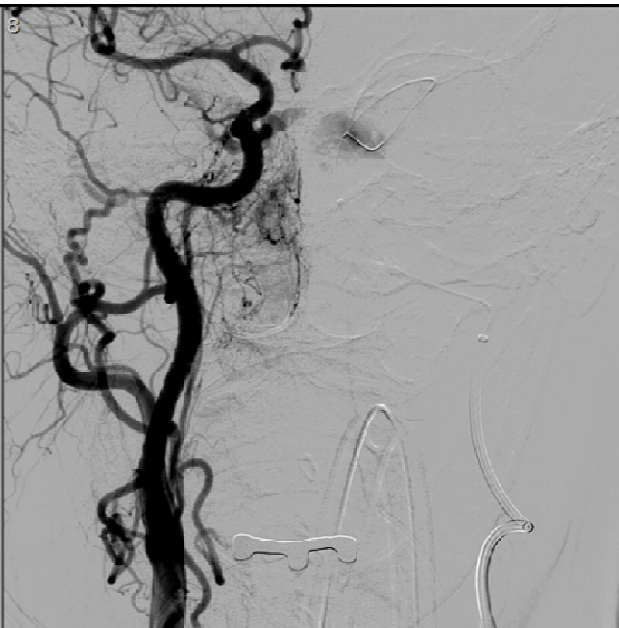
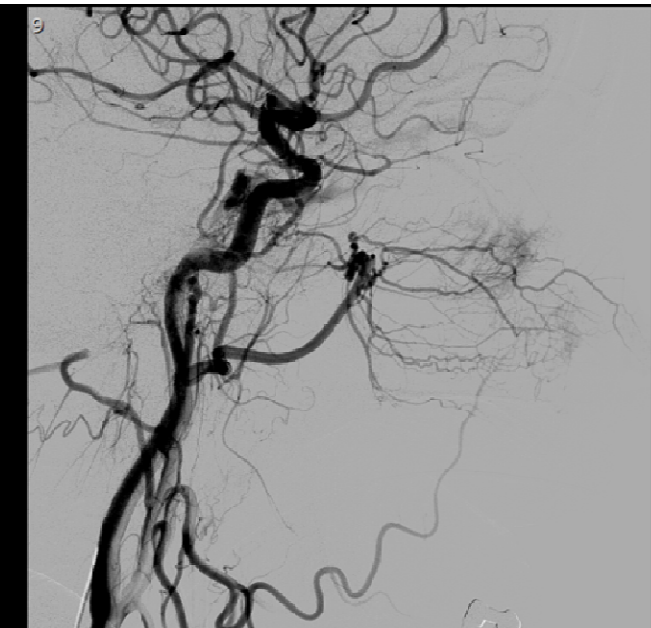
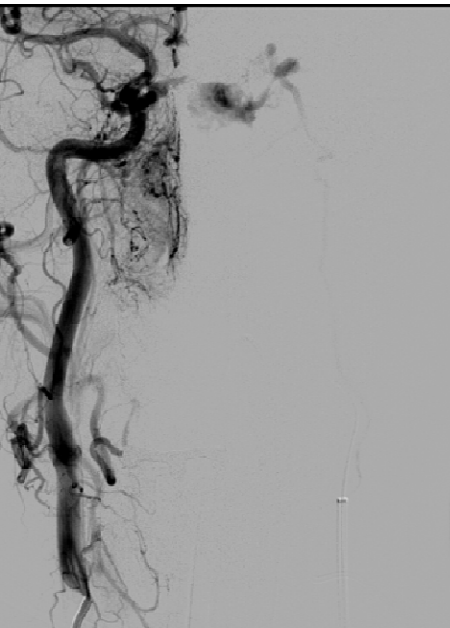
Anatómicas

Animaciones 3D

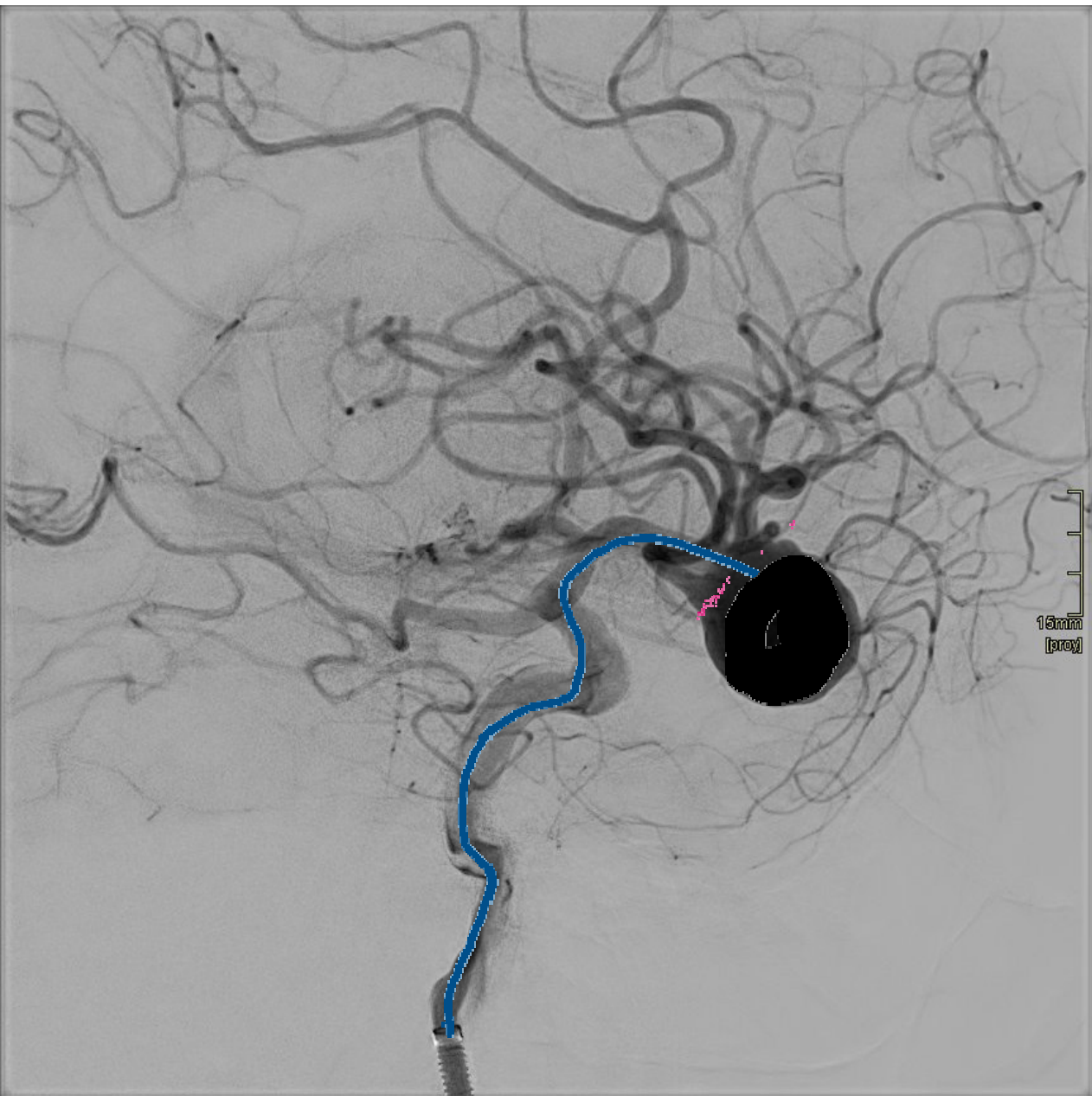
Presentación



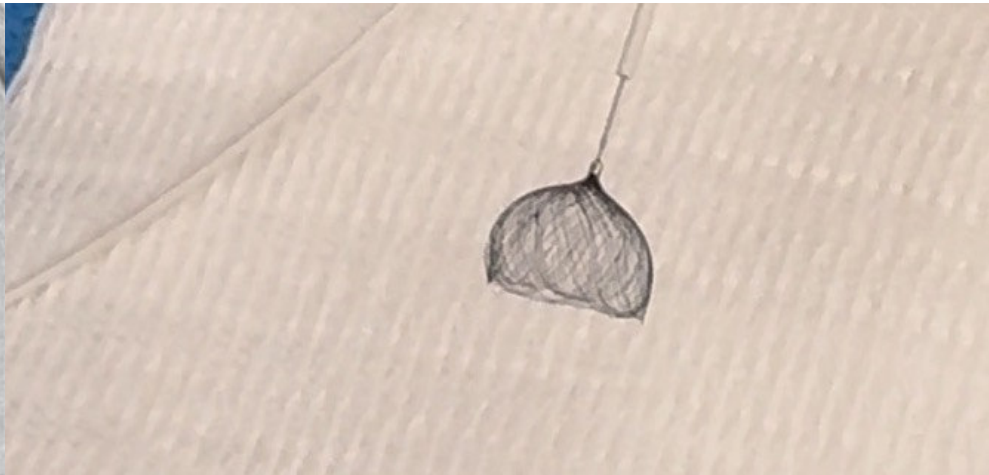
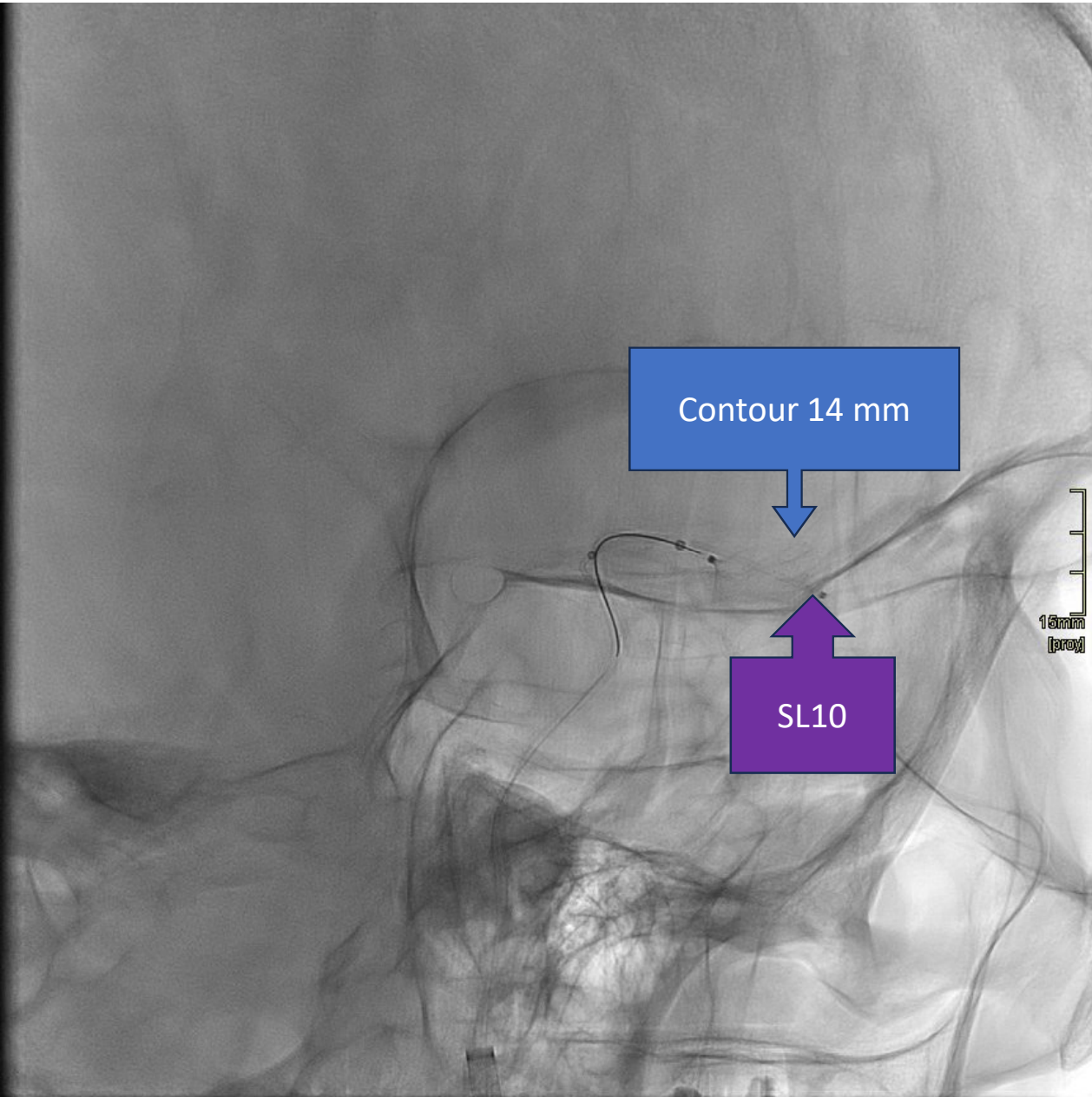
Three axial CT scan slices of the head, showing the skull and internal structures. The top slice is the most superior, the middle slice is at the level of the aneurysm, and the bottom slice is the most inferior. Each slice has a small white human figure in the bottom right corner. The interface includes a top toolbar with navigation icons and a bottom status bar with a blue square icon.

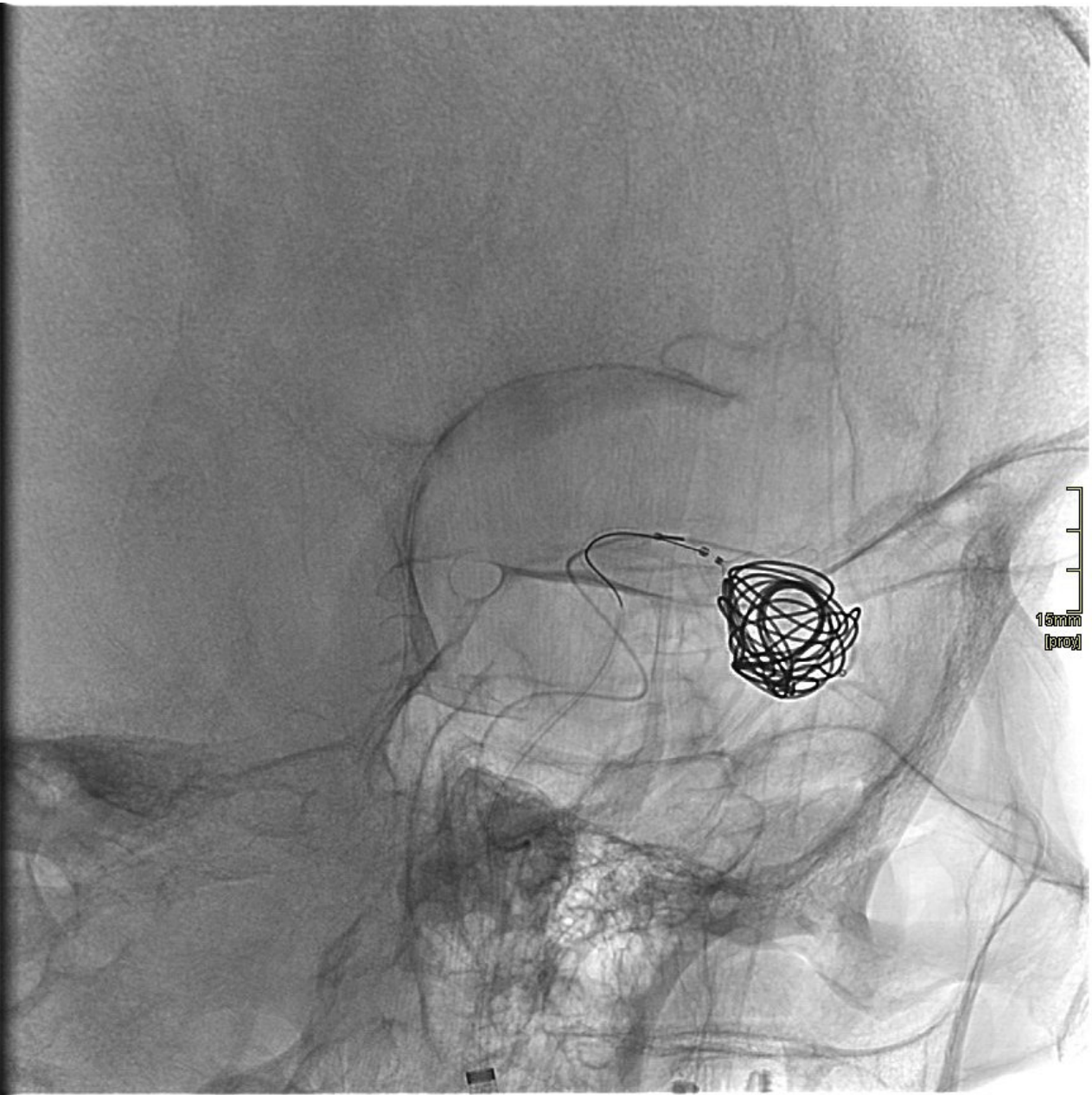
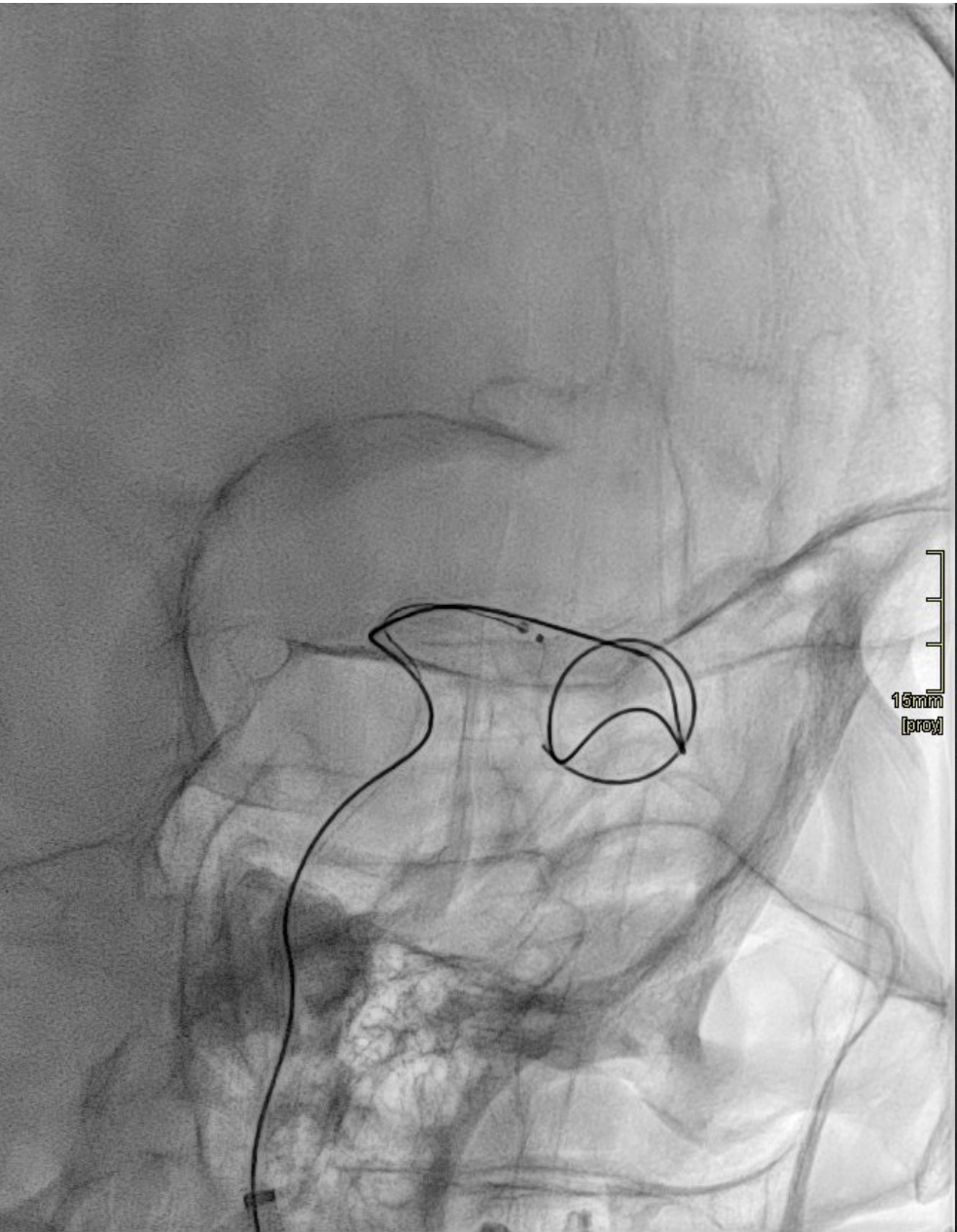


# Procedimiento











Asegurar:

- Contour respeta el origen de las tres ramas que nacen del cuello del aneurisma
- Que el coil está dentro del contour.



Después:

- Compactar el aneurisma al máximo sin desplazar el contour hacia el cuello
- Empujar el contour contra el aneurisma para aumentar su diámetro

